

Q. 1 – Q. 5 carry one mark each.

Q.1 “By giving him the last _____ of the cake, you will ensure lasting _____ in our house today.”

The words that best fill the blanks in the above sentence are

- (A) peas, piece (B) piece, peace
(C) peace, piece (D) peace, peas

Q.2 “Even though there is a vast scope for its _____, tourism has remained a/an _____ area.”

The words that best fill the blanks in the above sentence are

- (A) improvement, neglected
(B) rejection, approved
(C) fame, glum
(D) interest, disinterested

Q.3 If the number 715■423 is divisible by 3 (■ denotes the missing digit in the thousandths place), then the smallest whole number in the place of ■ is _____.

- (A) 0 (B) 2 (C) 5 (D) 6

Q.4 What is the value of $1 + \frac{1}{4} + \frac{1}{16} + \frac{1}{64} + \frac{1}{256} + \dots$?

- (A) 2 (B) $\frac{7}{4}$ (C) $\frac{3}{2}$ (D) $\frac{4}{3}$

Q.5 A 1.5 m tall person is standing at a distance of 3 m from a lamp post. The light from the lamp at the top of the post casts her shadow. The length of the shadow is twice her height. What is the height of the lamp post in meters?

- (A) 1.5 (B) 3 (C) 4.5 (D) 6

Q. 6 – Q. 10 carry two marks each.

Q.6 Leila aspires to buy a car worth Rs. 10,00,000 after 5 years. What is the minimum amount in Rupees that she should deposit now in a bank which offers 10% annual rate of interest, if the interest was compounded annually?

- (A) 5,00,000 (B) 6,21,000
(C) 6,66,667 (D) 7,50,000

Q.7 Two alloys A and B contain gold and copper in the ratios of 2:3 and 3:7 by mass, respectively. Equal masses of alloys A and B are melted to make an alloy C. The ratio of gold to copper in alloy C is _____.

(A) 5:10

(B) 7:13

(C) 6:11

(D) 9:13

Q.8 The Cricket Board has long recognized John's potential as a leader of the team. However, his on-field temper has always been a matter of concern for them since his junior days. While this aggression has filled stadia with die-hard fans, it has taken a toll on his own batting. Until recently, it appeared that he found it difficult to convert his aggression into big scores. Over the past three seasons though, that picture of John has been replaced by a cerebral, calculative and successful batsman-captain. After many years, it appears that the team has finally found a complete captain.

Which of the following statements can be logically inferred from the above paragraph?

- (i) Even as a junior cricketer, John was considered a good captain.
- (ii) Finding a complete captain is a challenge.
- (iii) Fans and the Cricket Board have differing views on what they want in a captain.
- (iv) Over the past three seasons John has accumulated big scores.

(A) (i), (ii) and (iii) only

(B) (iii) and (iv) only

(C) (ii) and (iv) only

(D) (i), (ii), (iii) and (iv)

Q.9 A cab was involved in a hit and run accident at night. You are given the following data about the cabs in the city and the accident.

- (i) 85% of cabs in the city are green and the remaining cabs are blue.
- (ii) A witness identified the cab involved in the accident as blue.
- (iii) It is known that a witness can correctly identify the cab colour only 80% of the time.

Which of the following options is closest to the probability that the accident was caused by a blue cab?

(A) 12%

(B) 15%

(C) 41%

(D) 80%

Q.10 A coastal region with unparalleled beauty is home to many species of animals. It is dotted with coral reefs and unspoilt white sandy beaches. It has remained inaccessible to tourists due to poor connectivity and lack of accommodation. A company has spotted the opportunity and is planning to develop a luxury resort with helicopter service to the nearest major city airport. Environmentalists are upset that this would lead to the region becoming crowded and polluted like any other major beach resorts.

Which one of the following statements can be logically inferred from the information given in the above paragraph?

- (A) The culture and tradition of the local people will be influenced by the tourists.
- (B) The region will become crowded and polluted due to tourism.
- (C) The coral reefs are on the decline and could soon vanish.
- (D) Helicopter connectivity would lead to an increase in tourists coming to the region.

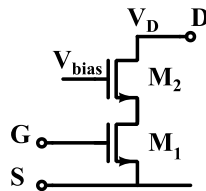
END OF THE QUESTION PAPER



collegedunia

Q. 1 – Q. 25 carry one mark each.

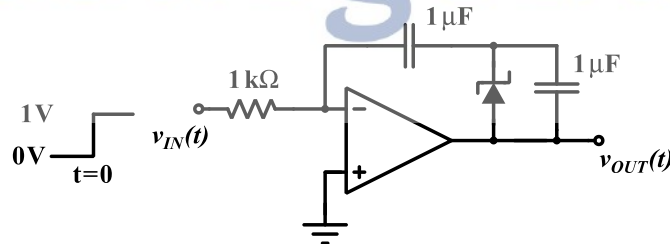
Q.1 Two identical nMOS transistors M_1 and M_2 are connected as shown below. The circuit is used as an amplifier with the input connected between G and S terminals and the output taken between D and S terminals. V_{bias} and V_D are so adjusted that both transistors are in saturation. The transconductance of this combination is defined as $g_m = \frac{\partial i_D}{\partial v_{GS}}$ while the output resistance is $r_o = \frac{\partial v_{DS}}{\partial i_D}$, where i_D is the current flowing into the drain of M_2 . Let g_{m1} , g_{m2} be the transconductances and r_{o1} , r_{o2} be the output resistances of transistors M_1 and M_2 , respectively.



Which of the following statements about estimates for g_m and r_o is correct?

- (A) $g_m \approx g_{m1} \cdot g_{m2} \cdot r_{o2}$ and $r_o \approx r_{o1} + r_{o2}$.
- (B) $g_m \approx g_{m1} + g_{m2}$ and $r_o \approx r_{o1} + r_{o2}$.
- (C) $g_m \approx g_{m1}$ and $r_o \approx r_{o1} \cdot g_{m2} \cdot r_{o2}$.
- (D) $g_m \approx g_{m1}$ and $r_o \approx r_{o2}$.

Q.2 In the circuit shown below, the op-amp is ideal and Zener voltage of the diode is 2.5 volts. At the input, unit step voltage is applied, i.e. $v_{IN}(t) = u(t)$ volts. Also, at $t = 0$, the voltage across each of the capacitors is zero.



The time t , in milliseconds, at which the output voltage v_{OUT} crosses -10 V is

- (A) 2.5
- (B) 5
- (C) 7.5
- (D) 10

Q.3 A good transimpedance amplifier has

- (A) low input impedance and high output impedance.
- (B) high input impedance and high output impedance.
- (C) high input impedance and low output impedance.
- (D) low input impedance and low output impedance.

Q.4 Let the input be u and the output be y of a system, and the other parameters are real constants. Identify which among the following systems is not a linear system:

(A) $\frac{d^3 y}{dt^3} + a_1 \frac{d^2 y}{dt^2} + a_2 \frac{dy}{dt} + a_3 y = b_3 u + b_2 \frac{du}{dt} + b_1 \frac{d^2 u}{dt^2}$ (with initial rest conditions)

(B) $y(t) = \int_0^t e^{\alpha(t-\tau)} \beta u(\tau) d\tau$

(C) $y = au + b, \quad b \neq 0$

(D) $y = au$

Q.5 The Nyquist stability criterion and the Routh criterion both are powerful analysis tools for determining the stability of feedback controllers. Identify which of the following statements is FALSE:

(A) Both the criteria provide information relative to the stable gain range of the system.

(B) The general shape of the Nyquist plot is readily obtained from the Bode magnitude plot for all minimum-phase systems.

(C) The Routh criterion is not applicable in the condition of transport lag, which can be readily handled by the Nyquist criterion.

(D) The closed-loop frequency response for a unity feedback system cannot be obtained from the Nyquist plot.

Q.6 Consider $p(s) = s^3 + a_2 s^2 + a_1 s + a_0$ with all real coefficients. It is known that its derivative $p'(s)$ has no real roots. The number of real roots of $p(s)$ is

(A) 0

(B) 1

(C) 2

(D) 3

Q.7 In a p-n junction diode at equilibrium, which one of the following statements is NOT TRUE?

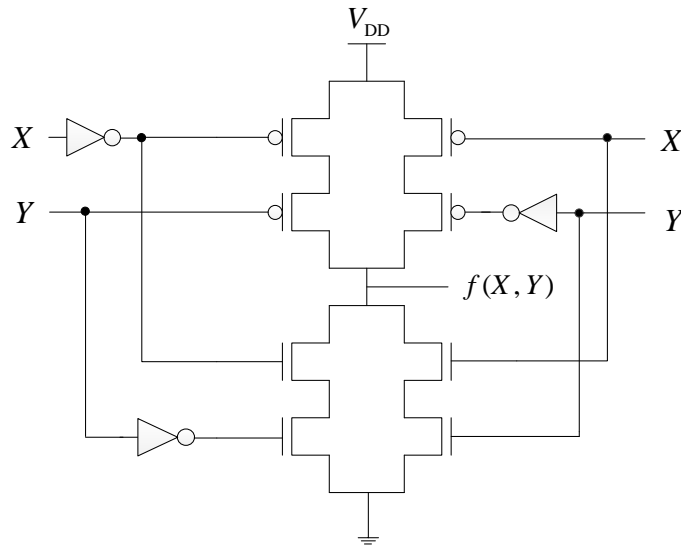
(A) The hole and electron diffusion current components are in the same direction.

(B) The hole and electron drift current components are in the same direction.

(C) On an average, holes and electrons drift in opposite direction.

(D) On an average, electrons drift and diffuse in the same direction.

Q.8 The logic function $f(X, Y)$ realized by the given circuit is



(A) NOR

(B) AND

(C) NAND

(D) XOR

Q.9 A function $F(A, B, C)$ defined by three Boolean variables A , B and C when expressed as sum of products is given by

$$F = \bar{A} \cdot \bar{B} \cdot \bar{C} + \bar{A} \cdot B \cdot \bar{C} + A \cdot \bar{B} \cdot \bar{C}$$

where, \bar{A} , \bar{B} , and \bar{C} are the complements of the respective variables. The product of sums (POS) form of the function F is

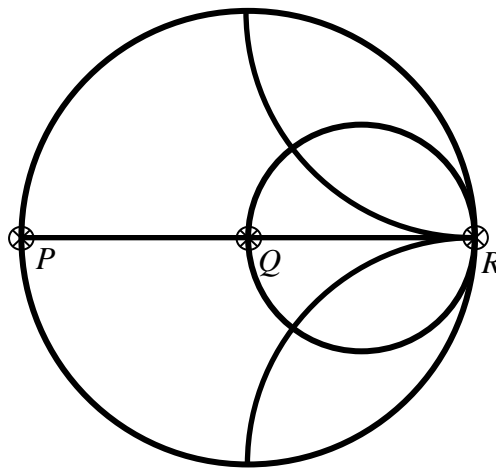
(A) $F = (A + B + C) \cdot (A + \bar{B} + C) \cdot (\bar{A} + B + C)$

(B) $F = (\bar{A} + \bar{B} + \bar{C}) \cdot (\bar{A} + B + \bar{C}) \cdot (A + \bar{B} + \bar{C})$

(C) $F = (A + B + \bar{C}) \cdot (A + \bar{B} + \bar{C}) \cdot (\bar{A} + B + \bar{C}) \cdot (\bar{A} + \bar{B} + C) \cdot (\bar{A} + \bar{B} + \bar{C})$

(D) $F = (\bar{A} + \bar{B} + C) \cdot (\bar{A} + B + C) \cdot (A + \bar{B} + C) \cdot (A + B + \bar{C}) \cdot (A + B + C)$

- Q.10 The points P , Q , and R shown on the Smith chart (normalized impedance chart) in the following figure represent:



- (A) P: Open Circuit, Q: Short Circuit, R: Matched Load
 (B) P: Open Circuit, Q: Matched Load, R: Short Circuit
 (C) P: Short Circuit, Q: Matched Load, R: Open Circuit
 (D) P: Short Circuit, Q: Open Circuit, R: Matched Load

- Q.11 Let \mathbf{M} be a real 4×4 matrix. Consider the following statements:

S1: \mathbf{M} has 4 linearly independent eigenvectors.

S2: \mathbf{M} has 4 distinct eigenvalues.

S3: \mathbf{M} is non-singular (invertible).

Which one among the following is TRUE?

- (A) S1 implies S2
 (B) S1 implies S3
 (C) S2 implies S1
 (D) S3 implies S2

- Q.12 Let $f(x, y) = \frac{ax^2 + by^2}{xy}$, where a and b are constants. If $\frac{\partial f}{\partial x} = \frac{\partial f}{\partial y}$ at $x=1$ and $y=2$, then the relation between a and b is

- (A) $a = \frac{b}{4}$ (B) $a = \frac{b}{2}$ (C) $a = 2b$ (D) $a = 4b$

- Q.13 A discrete-time all-pass system has two of its poles at $0.25 \angle 0^\circ$ and $2 \angle 30^\circ$. Which one of the following statements about the system is TRUE?

- (A) It has two more poles at $0.5 \angle 30^\circ$ and $4 \angle 0^\circ$.
 (B) It is stable only when the impulse response is two-sided.
 (C) It has constant phase response over all frequencies.
 (D) It has constant phase response over the entire z -plane.

- Q.14 Let $x(t)$ be a periodic function with period $T = 10$. The Fourier series coefficients for this series are denoted by a_k , that is

$$x(t) = \sum_{k=-\infty}^{\infty} a_k e^{jk\frac{2\pi}{T}t}$$

The same function $x(t)$ can also be considered as a periodic function with period $T' = 40$. Let b_k be the Fourier series coefficients when period is taken as T' . If $\sum_{k=-\infty}^{\infty} |a_k| = 16$, then $\sum_{k=-\infty}^{\infty} |b_k|$ is equal to

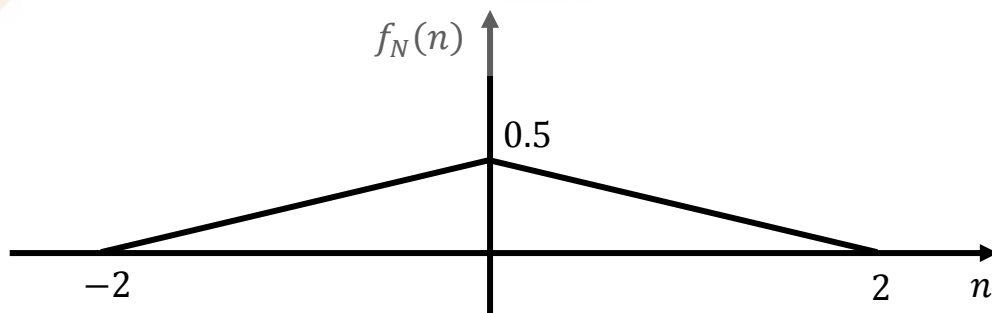
- (A) 256 (B) 64 (C) 16 (D) 4
- Q.15 Consider the following amplitude modulated signal:

$$s(t) = \cos(2000 \pi t) + 4 \cos(2400 \pi t) + \cos(2800 \pi t).$$

The ratio (accurate to three decimal places) of the power of the message signal to the power of the carrier signal is _____.

- Q.16 Consider a binary channel code in which each codeword has a fixed length of 5 bits. The Hamming distance between any pair of distinct codewords in this code is at least 2. The maximum number of codewords such a code can contain is _____.

- Q.17 A binary source generates symbols $X \in \{-1, 1\}$ which are transmitted over a noisy channel. The probability of transmitting $X = 1$ is 0.5. Input to the threshold detector is $R = X + N$. The probability density function $f_N(n)$ of the noise N is shown below.



If the detection threshold is zero, then the probability of error (correct to two decimal places) is _____.

- Q.18 A p-n step junction diode with a contact potential of 0.65 V has a depletion width of $1 \mu\text{m}$ at equilibrium. The forward voltage (in volts, correct to two decimal places) at which this width reduces to $0.6 \mu\text{m}$ is _____.

Q.19 A traffic signal cycles from GREEN to YELLOW, YELLOW to RED and RED to GREEN. In each cycle, GREEN is turned on for 70 seconds, YELLOW is turned on for 5 seconds and the RED is turned on for 75 seconds. This traffic light has to be implemented using a finite state machine (FSM). The only input to this FSM is a clock of 5 second period. The minimum number of flip-flops required to implement this FSM is _____.

Q.20 There are two photolithography systems: one with light source of wavelength $\lambda_1 = 156$ nm (System 1) and another with light source of wavelength $\lambda_2 = 325$ nm (System 2). Both photolithography systems are otherwise identical. If the minimum feature sizes that can be realized using System1 and System2 are $L_{\min 1}$ and $L_{\min 2}$ respectively, the ratio $L_{\min 1}/L_{\min 2}$ (correct to two decimal places) is _____.

Q.21 A lossy transmission line has resistance per unit length $R = 0.05 \Omega/\text{m}$. The line is distortionless and has characteristic impedance of 50Ω . The attenuation constant (in Np/m, correct to three decimal places) of the line is _____.

Q.22 Consider matrix $\mathbf{A} = \begin{bmatrix} k & 2k \\ k^2 - k & k^2 \end{bmatrix}$ and vector $\mathbf{x} = \begin{bmatrix} x_1 \\ x_2 \end{bmatrix}$. The number of distinct real values of k for which the equation $\mathbf{Ax} = \mathbf{0}$ has infinitely many solutions is _____.

Q.23 Let X_1, X_2, X_3 and X_4 be independent normal random variables with zero mean and unit variance. The probability that X_4 is the smallest among the four is _____.

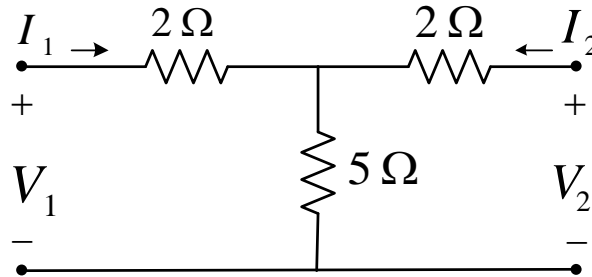
Q.24 Taylor series expansion of $f(x) = \int_0^x e^{-\left(\frac{t^2}{2}\right)} dt$ around $x = 0$ has the form

$$f(x) = a_0 + a_1x + a_2x^2 + \dots$$

The coefficient a_2 (correct to two decimal places) is equal to _____.

Q.25 The $ABCD$ matrix for a two-port network is defined by:

$$\begin{bmatrix} V_1 \\ I_1 \end{bmatrix} = \begin{bmatrix} A & B \\ C & D \end{bmatrix} \begin{bmatrix} V_2 \\ -I_2 \end{bmatrix}$$



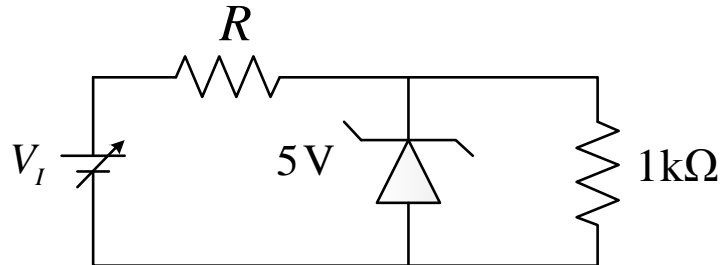
The parameter B for the given two-port network (in ohms, correct to two decimal places) is _____.



collegedunia

Q. 26 – Q. 55 carry two marks each.

- Q.26 The circuit shown in the figure is used to provide regulated voltage (5 V) across the $1\text{ k}\Omega$ resistor. Assume that the Zener diode has a constant reverse breakdown voltage for a current range, starting from a minimum required Zener current, $I_{Z\text{min}} = 2\text{ mA}$ to its maximum allowable current. The input voltage V_I may vary by 5% from its nominal value of 6 V. The resistance of the diode in the breakdown region is negligible.



The value of R and the minimum required power dissipation rating of the diode, respectively, are

- (A) $186\ \Omega$ and 10 mW (B) $100\ \Omega$ and 40 mW
 (C) $100\ \Omega$ and 10 mW (D) $186\ \Omega$ and 40 mW
- Q.27 Let $c(t) = A_c \cos(2\pi f_c t)$ and $m(t) = \cos(2\pi f_m t)$. It is given that $f_c \gg 5f_m$. The signal $c(t) + m(t)$ is applied to the input of a non-linear device, whose output $v_o(t)$ is related to the input $v_i(t)$ as $v_o(t) = av_i(t) + bv_i^2(t)$, where a and b are positive constants. The output of the non-linear device is passed through an ideal band-pass filter with center frequency f_c and bandwidth $3f_m$, to produce an amplitude modulated (AM) wave. If it is desired to have the sideband power of the AM wave to be half of the carrier power, then a/b is

- (A) 0.25 (B) 0.5 (C) 1 (D) 2

- Q.28 Consider a white Gaussian noise process $N(t)$ with two-sided power spectral density $S_N(f) = 0.5\text{ W/Hz}$ as input to a filter with impulse response $0.5e^{-t^2/2}$ (where t is in seconds) resulting in output $Y(t)$. The power in $Y(t)$ in watts is

- (A) 0.11 (B) 0.22 (C) 0.33 (D) 0.44

Q.29 The state equation and the output equation of a control system are given below:

$$\dot{\mathbf{x}} = \begin{bmatrix} -4 & -1.5 \\ 4 & 0 \end{bmatrix} \mathbf{x} + \begin{bmatrix} 2 \\ 0 \end{bmatrix} u,$$

$$y = [1.5 \quad 0.625] \mathbf{x}.$$

The transfer function representation of the system is

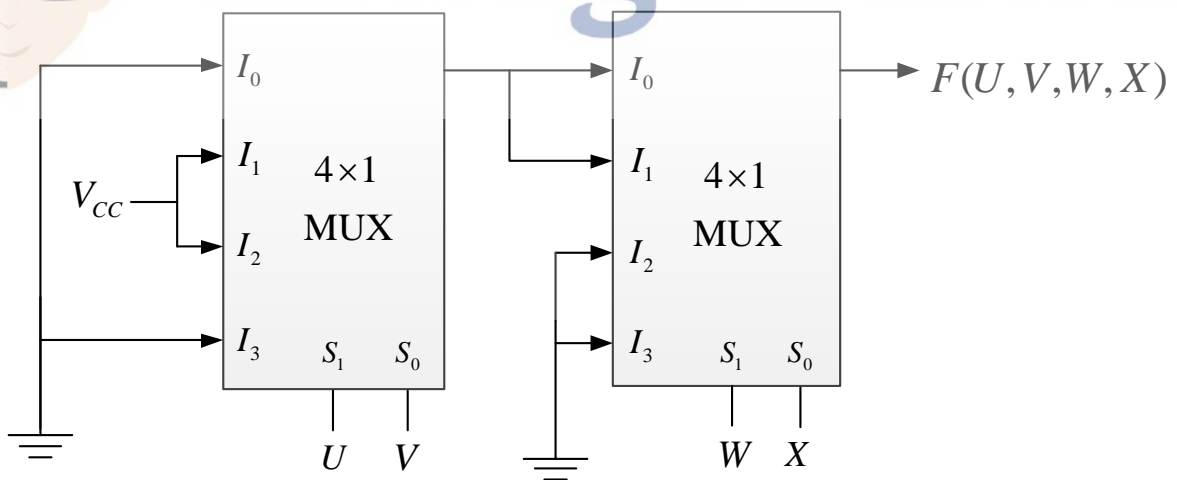
- (A) $\frac{3s+5}{s^2+4s+6}$ (B) $\frac{3s-1.875}{s^2+4s+6}$
 (C) $\frac{4s+1.5}{s^2+4s+6}$ (D) $\frac{6s+5}{s^2+4s+6}$

Q.30 Red (R), Green (G) and Blue (B) Light Emitting Diodes (LEDs) were fabricated using p - n junctions of three different inorganic semiconductors having different band-gaps. The built-in voltages of red, green and blue diodes are V_R , V_G and V_B , respectively. Assume donor and acceptor doping to be the same (N_A and N_D , respectively) in the p and n sides of all the three diodes.

Which one of the following relationships about the built-in voltages is TRUE?

- (A) $V_R > V_G > V_B$
 (B) $V_R < V_G < V_B$
 (C) $V_R = V_G = V_B$
 (D) $V_R > V_G < V_B$

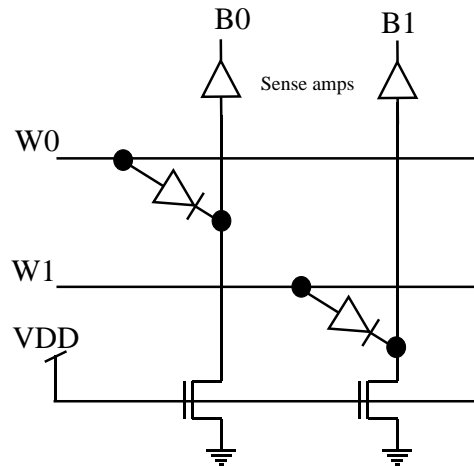
Q.31 A four-variable Boolean function is realized using 4×1 multiplexers as shown in the figure.



The minimized expression for $F(U, V, W, X)$ is

- (A) $(UV + \bar{U}\bar{V})\bar{W}$ (B) $(UV + \bar{U}\bar{V})(\bar{W}\bar{X} + \bar{W}X)$
 (C) $(U\bar{V} + \bar{U}V)\bar{W}$ (D) $(U\bar{V} + \bar{U}V)(\bar{W}\bar{X} + \bar{W}X)$

- Q.32 A 2×2 ROM array is built with the help of diodes as shown in the circuit below. Here W_0 and W_1 are signals that select the word lines and B_0 and B_1 are signals that are output of the sense amps based on the stored data corresponding to the bit lines during the read operation.



$$\begin{matrix} & B_0 & B_1 \\ W_0 & \begin{bmatrix} D_{00} & D_{01} \end{bmatrix} \\ W_1 & \begin{bmatrix} D_{10} & D_{11} \end{bmatrix} \end{matrix}$$

Bits stored in the ROM Array

During the read operation, the selected word line goes high and the other word line is in a high impedance state. As per the implementation shown in the circuit diagram above, what are the bits corresponding to D_{ij} (where $i = 0$ or 1 and $j = 0$ or 1) stored in the ROM?

- (A) $\begin{bmatrix} 1 & 0 \\ 0 & 1 \end{bmatrix}$ (B) $\begin{bmatrix} 0 & 1 \\ 1 & 0 \end{bmatrix}$ (C) $\begin{bmatrix} 1 & 0 \\ 1 & 0 \end{bmatrix}$ (D) $\begin{bmatrix} 1 & 1 \\ 0 & 0 \end{bmatrix}$

- Q.33 The distance (in meters) a wave has to propagate in a medium having a skin depth of 0.1 m so that the amplitude of the wave attenuates by 20 dB, is

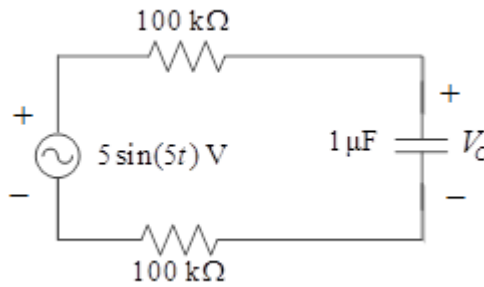
- (A) 0.12 (B) 0.23 (C) 0.46 (D) 2.3

- Q.34 A curve passes through the point $(x=1, y=0)$ and satisfies the differential equation

$$\frac{dy}{dx} = \frac{x^2 + y^2}{2y} + \frac{y}{x}. \text{ The equation that describes the curve is}$$

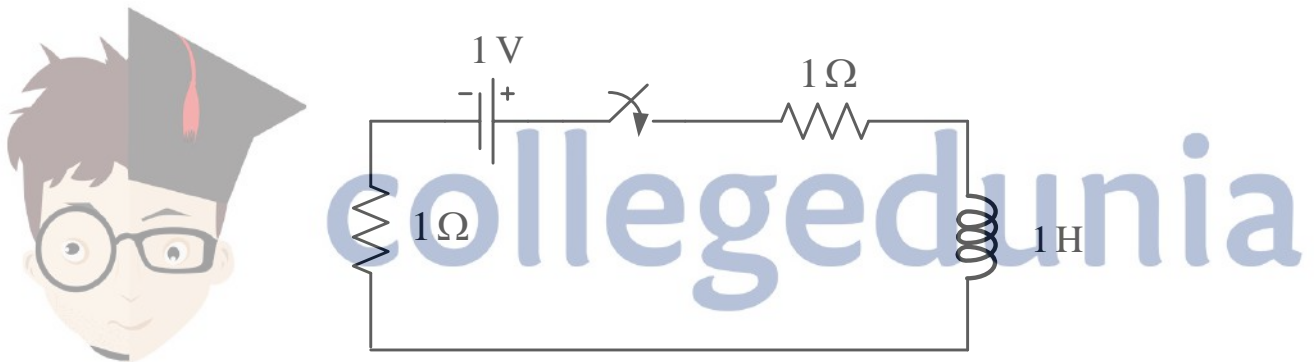
- (A) $\ln\left(1 + \frac{y^2}{x^2}\right) = x - 1$ (B) $\frac{1}{2}\ln\left(1 + \frac{y^2}{x^2}\right) = x - 1$
 (C) $\ln\left(1 + \frac{y}{x}\right) = x - 1$ (D) $\frac{1}{2}\ln\left(1 + \frac{y}{x}\right) = x - 1$

Q.35 For the circuit given in the figure, the voltage V_C (in volts) across the capacitor is

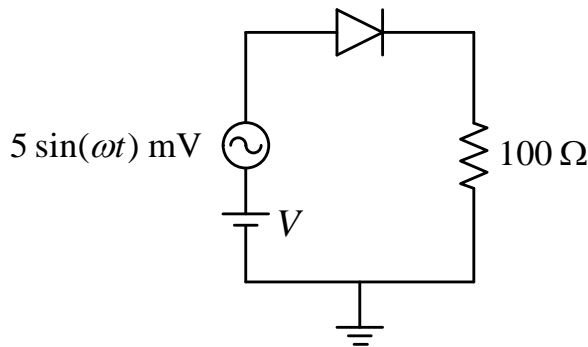


- (A) $1.25\sqrt{2} \sin(5t - 0.25\pi)$
- (B) $1.25\sqrt{2} \sin(5t - 0.125\pi)$
- (C) $2.5\sqrt{2} \sin(5t - 0.25\pi)$
- (D) $2.5\sqrt{2} \sin(5t - 0.125\pi)$

Q.36 For the circuit given in the figure, the magnitude of the loop current (in amperes, correct to three decimal places) 0.5 second after closing the switch is _____.

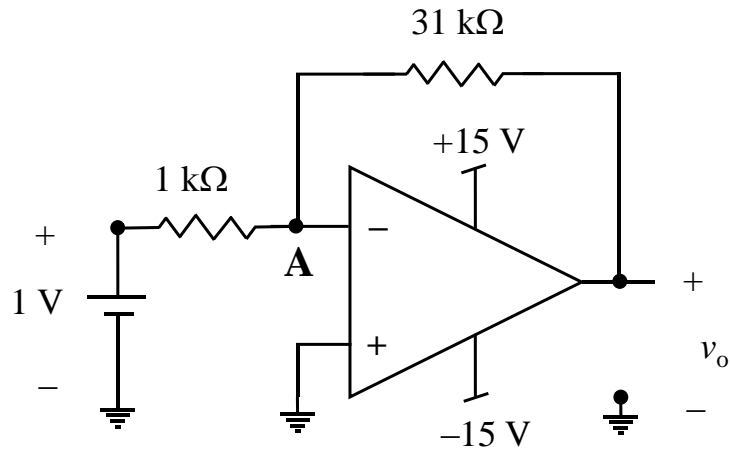


Q.37 A dc current of $26 \mu\text{A}$ flows through the circuit shown. The diode in the circuit is forward biased and it has an ideality factor of one. At the quiescent point, the diode has a junction capacitance of 0.5 nF . Its neutral region resistances can be neglected. Assume that the room temperature thermal equivalent voltage is 26 mV .



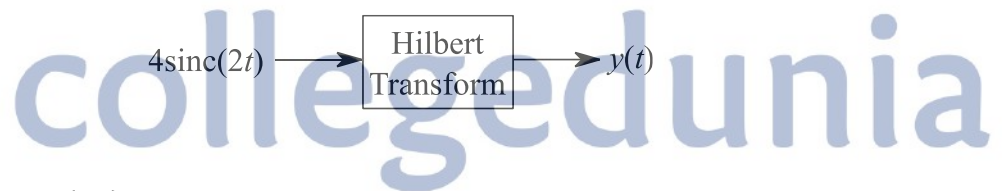
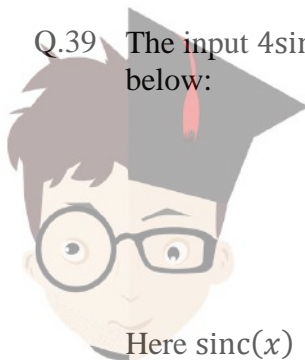
For $\omega = 2 \times 10^6 \text{ rad/s}$, the amplitude of the small-signal component of diode current (in μA , correct to one decimal place) is _____.

Q.38 An op-amp based circuit is implemented as shown below.



In the above circuit, assume the op-amp to be ideal. The voltage (in volts, correct to one decimal place) at node **A**, connected to the negative input of the op-amp as indicated in the figure is _____.

Q.39 The input $4\text{sinc}(2t)$ is fed to a Hilbert transformer to obtain $y(t)$, as shown in the figure below:



Here $\text{sinc}(x) = \frac{\sin(\pi x)}{\pi x}$. The value (accurate to two decimal places) of $\int_{-\infty}^{\infty} |y(t)|^2 dt$ is _____.

Q.40 A random variable X takes values -0.5 and 0.5 with probabilities $\frac{1}{4}$ and $\frac{3}{4}$, respectively. The noisy observation of X is $Y = X + Z$, where Z has uniform probability density over the interval $(-1, 1)$. X and Z are independent. If the MAP rule based detector outputs \hat{X} as

$$\hat{X} = \begin{cases} -0.5, & Y < \alpha \\ 0.5, & Y \geq \alpha, \end{cases}$$

then the value of α (accurate to two decimal places) is _____.

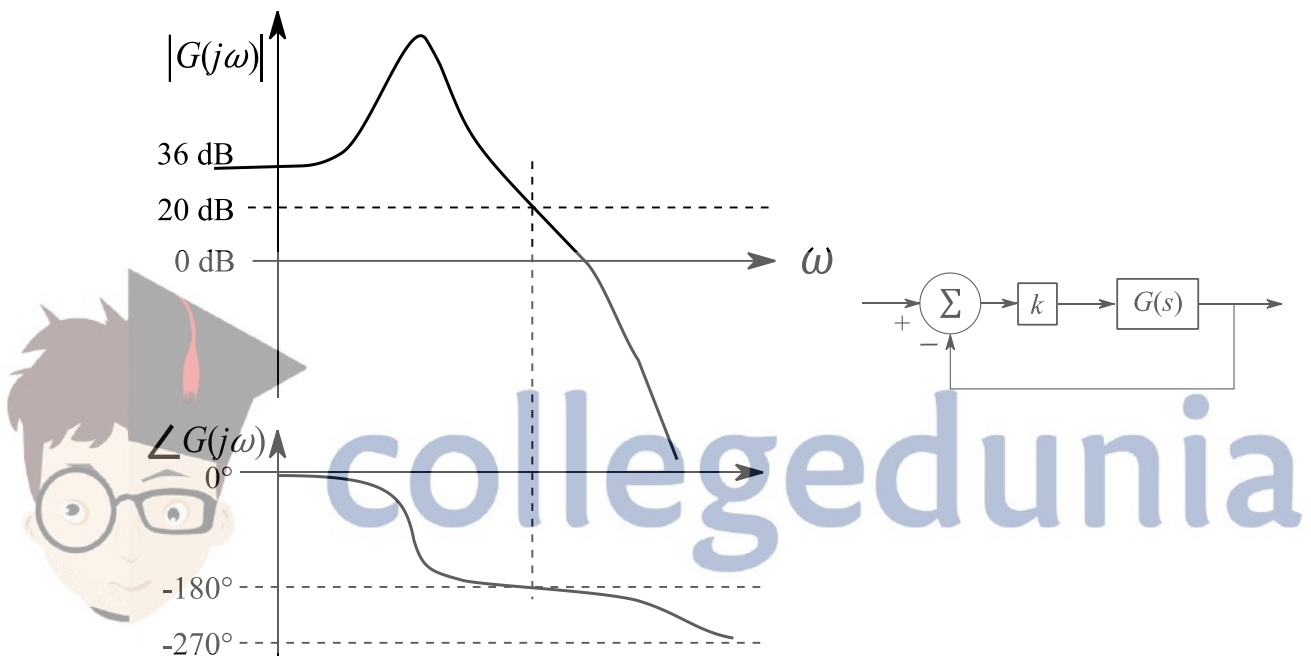
Q.41 For a unity feedback control system with the forward path transfer function

$$G(s) = \frac{K}{s(s+2)}$$

The peak resonant magnitude M_r of the closed-loop frequency response is 2. The corresponding value of the gain K (correct to two decimal places) is _____.

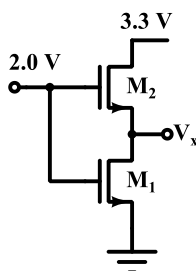
Q.42 The figure below shows the Bode magnitude and phase plots of a stable transfer function

$$G(s) = \frac{n_0}{s^3 + d_2s^2 + d_1s + d_0}$$



Consider the negative unity feedback configuration with gain k in the feedforward path. The closed loop is stable for $k < k_0$. The maximum value of k_0 is _____.

Q.43 In the circuit shown below, the (W/L) value for M_2 is twice that for M_1 . The two nMOS transistors are otherwise identical. The threshold voltage V_T for both transistors is 1.0V. Note that V_{GS} for M_2 must be > 1.0 V.



Current through the nMOS transistors can be modeled as

$$I_{DS} = \mu C_{ox} \left(\frac{W}{L}\right) \left((V_{GS} - V_T)V_{DS} - \frac{1}{2} V_{DS}^2 \right) \text{ for } V_{DS} \leq V_{GS} - V_T$$

$$I_{DS} = \mu C_{ox} \left(\frac{W}{L}\right) (V_{GS} - V_T)^2 / 2 \text{ for } V_{DS} \geq V_{GS} - V_T$$

The voltage (in volts, accurate to two decimal places) at V_x is _____.

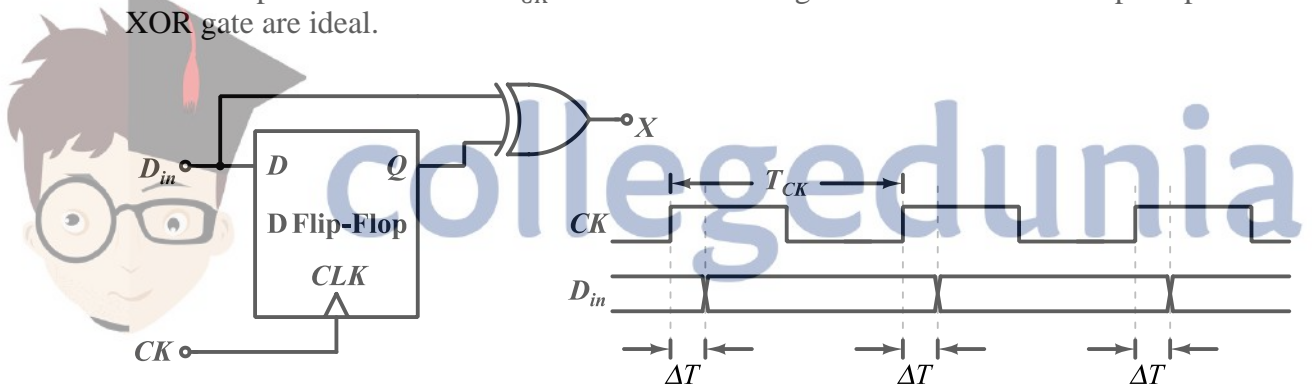
Q.44 A solar cell of area 1.0 cm^2 , operating at 1.0 sun intensity, has a short circuit current of 20 mA, and an open circuit voltage of 0.65 V. Assuming room temperature operation and thermal equivalent voltage of 26 mV, the open circuit voltage (in volts, correct to two decimal places) at 0.2 sun intensity is _____.

Q.45 A junction is made between p^- Si with doping density $N_{A1} = 10^{15} \text{ cm}^{-3}$ and p Si with doping density $N_{A2} = 10^{17} \text{ cm}^{-3}$.

Given: Boltzmann constant $k = 1.38 \times 10^{-23} \text{ J}\cdot\text{K}^{-1}$, electronic charge $q = 1.6 \times 10^{-19} \text{ C}$. Assume 100% acceptor ionization.

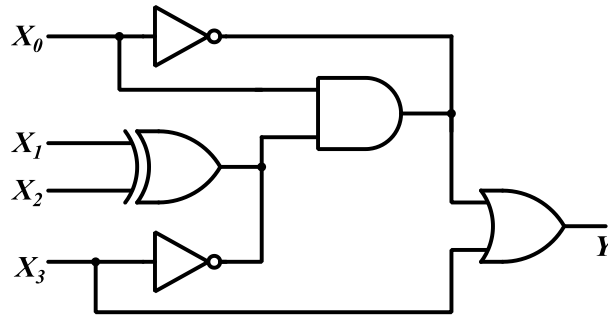
At room temperature ($T = 300\text{K}$), the magnitude of the built-in potential (in volts, correct to two decimal places) across this junction will be _____.

Q.46 In the circuit shown below, a positive edge-triggered D Flip-Flop is used for sampling input data D_{in} using clock CK . The XOR gate outputs 3.3 volts for logic HIGH and 0 volts for logic LOW levels. The data bit and clock periods are equal and the value of $\Delta T/T_{CK} = 0.15$, where the parameters ΔT and T_{CK} are shown in the figure. Assume that the Flip-Flop and the XOR gate are ideal.



If the probability of input data bit (D_{in}) transition in each clock period is 0.3, the average value (in volts, accurate to two decimal places) of the voltage at node X, is _____.

Q.47 The logic gates shown in the digital circuit below use strong pull-down nMOS transistors for LOW logic level at the outputs. When the pull-downs are off, high-value resistors set the output logic levels to HIGH (i.e. the pull-ups are weak). Note that some nodes are intentionally shorted to implement “wired logic”. Such shorted nodes will be HIGH only if the outputs of all the gates whose outputs are shorted are HIGH.



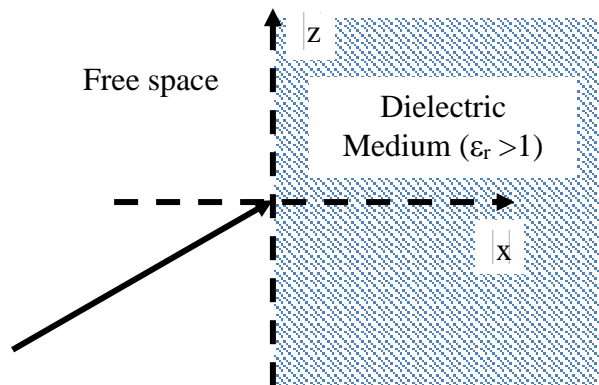
The number of distinct values of $X_3X_2X_1X_0$ (out of the 16 possible values) that give $Y = 1$ is _____.

Q.48 The cutoff frequency of TE_{01} mode of an air filled rectangular waveguide having inner dimensions a cm \times b cm ($a > b$) is twice that of the dominant TE_{10} mode. When the waveguide is operated at a frequency which is 25% higher than the cutoff frequency of the dominant mode, the guide wavelength is found to be 4 cm. The value of b (in cm, correct to two decimal places) is _____.

Q.49 A uniform plane wave traveling in free space and having the electric field

$$\vec{E} = (\sqrt{2}\hat{a}_x - \hat{a}_z) \cos[6\sqrt{3}\pi \times 10^8 t - 2\pi(x + \sqrt{2}z)] \text{ V/m}$$

is incident on a dielectric medium (relative permittivity > 1 , relative permeability = 1) as shown in the figure and there is no reflected wave.



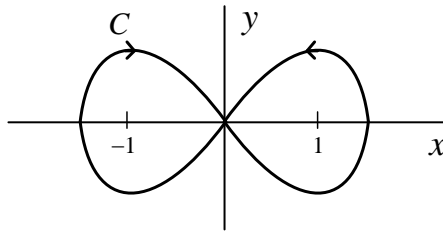
The relative permittivity (correct to two decimal places) of the dielectric medium is _____.

Q.50 The position of a particle $y(t)$ is described by the differential equation:

$$\frac{d^2y}{dt^2} = -\frac{dy}{dt} - \frac{5y}{4}.$$

The initial conditions are $y(0) = 1$ and $\left. \frac{dy}{dt} \right|_{t=0} = 0$. The position (accurate to two decimal places) of the particle at $t = \pi$ is _____.

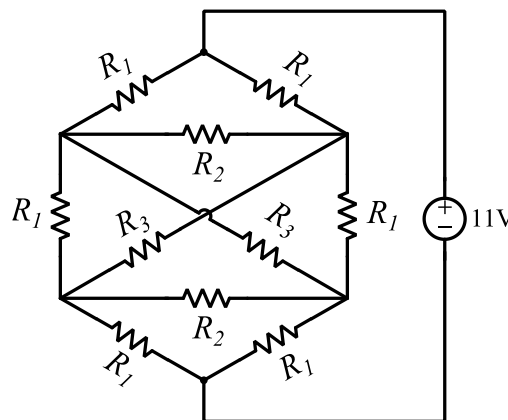
Q.51 The contour C given below is on the complex plane $z = x + jy$, where $j = \sqrt{-1}$.



The value of the integral $\frac{1}{\pi j} \oint_C \frac{dz}{z^2 - 1}$ is _____.

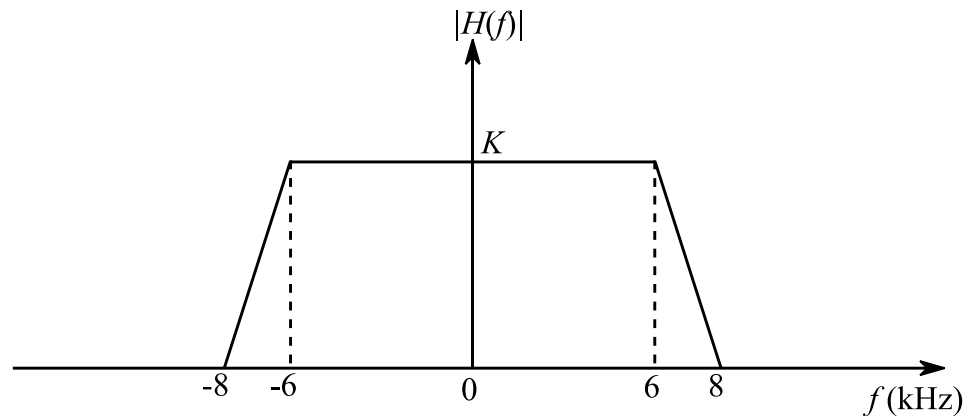
Q.52 Let $r = x^2 + y - z$ and $z^3 - xy + yz + y^3 = 1$. Assume that x and y are independent variables. At $(x, y, z) = (2, -1, 1)$, the value (correct to two decimal places) of $\frac{\partial r}{\partial x}$ is _____.

Q.53 Consider the network shown below with $R_1 = 1\Omega$, $R_2 = 2\Omega$ and $R_3 = 3\Omega$. The network is connected to a constant voltage source of 11V.



The magnitude of the current (in amperes, accurate to two decimal places) through the source is _____.

- Q.54 A band limited low-pass signal $x(t)$ of bandwidth 5 kHz is sampled at a sampling rate f_s . The signal $x(t)$ is reconstructed using the reconstruction filter $H(f)$ whose magnitude response is shown below:

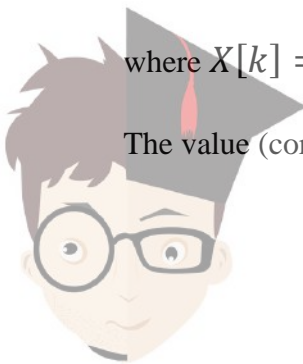


The minimum sampling rate f_s (in kHz) for perfect reconstruction of $x(t)$ is _____.

- Q.55 Let $X[k] = k + 1, 0 \leq k \leq 7$ be 8-point DFT of a sequence $x[n]$,

where $X[k] = \sum_{n=0}^{N-1} x[n] e^{-j2\pi nk/N}$.

The value (correct to two decimal places) of $\sum_{n=0}^3 x[2n]$ is _____.



collegedunia

END OF THE QUESTION PAPER