

GATE Cutoff 2022: Previous Year Paper-wise Qualifying Marks, Opening and Closing Ranks for IITs & NITs

GATE Cutoff 2022 will be released by IIT Kharagpur for all 29 papers along with the declaration of result. The cutoff will be released separately for each category in the form of minimum qualifying marks required by candidates to be eligible for [GATE 2022 Counselling](#) and admission to IITs and NITs. GATE Cutoff is released in two forms- Qualifying and Admission Cutoffs. Each of the participating institutes releases their own minimum admission cutoff for different courses. Candidates whose [GATE scores](#) are above the admission cutoff are eligible for admission to their desired M.E./M.Tech course.

Quick Links:

GATE Cutoff for IITs	GATE Cutoff for NITs
--------------------------------------	--------------------------------------

GATE Cutoff 2022

GATE Cutoff 2022 will be released along with the declaration of results. The same will be updated here for each category after its release. Candidates can meanwhile check the previous years' GATE Cutoff and trends in the section below along with the previous year cutoff for top IITs and NITs.

Previous Year GATE Cutoffs for 2021, 2020, 2019, 2018 and 2017

GATE Cutoff 2021 was released by [IIT Bombay](#). About 8,80,000 candidates applied for the exam, of which 7,11,542 appeared for the exam while only 17.82% qualified the exam.

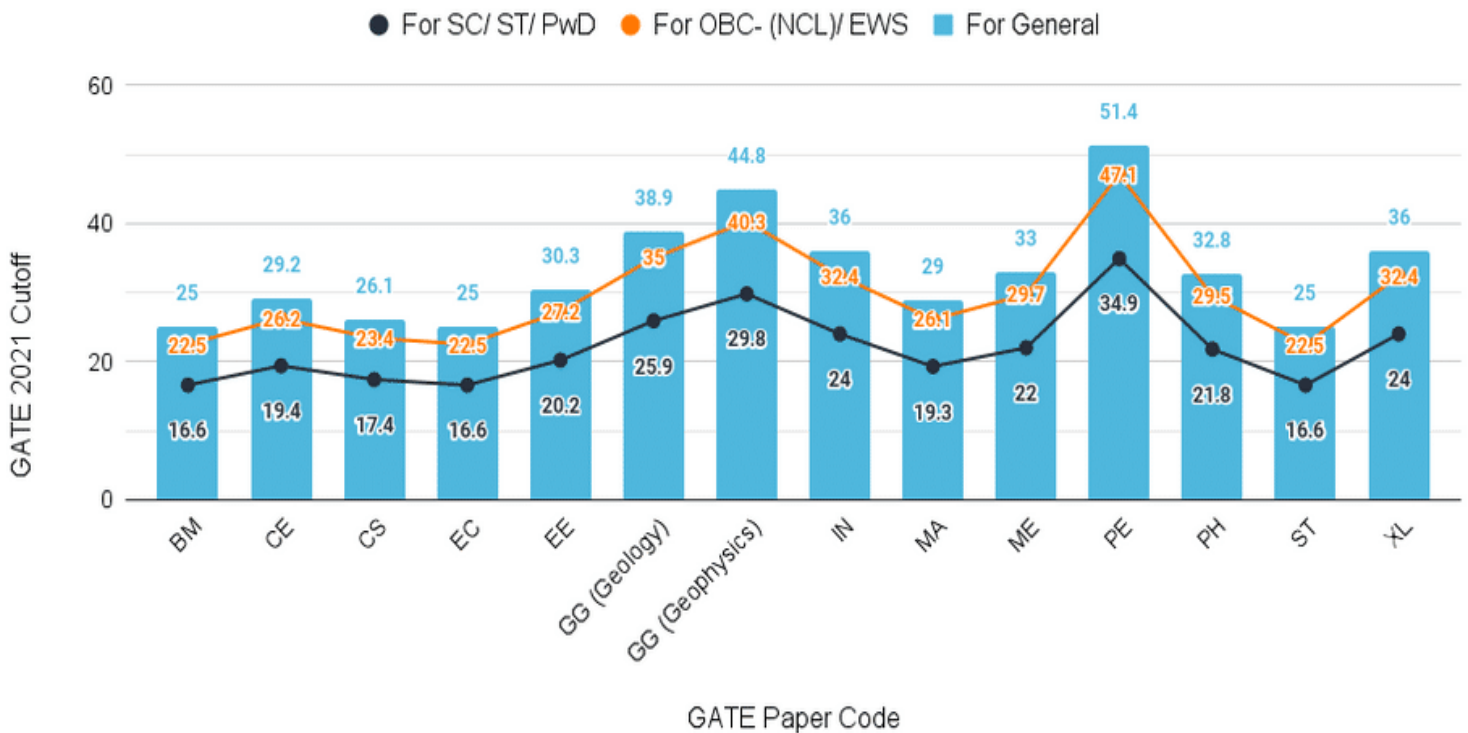
GATE 2021 Cutoff			
Paper Code	For General	For OBC- (NCL)/ EWS	For SC/ ST/ PwD
Aerospace Engineering (AE)	26.3	23.6	17.5
Agriculture Engineering (AG)	25	22.5	16.6
Architecture and Planning (AR)	40.9	36.8	27.2

Biomedical Engineering (BM)	25	22.5	16.6
Biotechnology (BT)	30	27	20
Civil Engineering (CE)	29.2	26.2	19.4
Chemical Engineering (CH)	35.1	31.5	23.4
Computer Science & Information Technology (CS)	26.1	23.4	17.4
Chemistry (CY)	36.2	32.5	24.1
Electronics Communication Engineering (EC)	25	22.5	16.6
Electrical Engineering (EE)	30.3	27.2	20.2
Environmental Science & Engineering (ES)	39.6	35.6	26.4
Ecology Evolution (EY)	35.7	32.1	23.8
Geology (GG)	38.9	35	25.9
Geophysics (GG)	44.8	40.3	29.8
Instrumentation Engineering (IN)	36	32.4	24
Mathematics (MA)	29	26.1	19.3
Mechanical Engineering (ME)	33	29.7	22
Mining Engineering (MN)	31	27.9	20.6
Metallurgical Engineering (MT)	48.5	43.6	32.3
Petroleum Engineering (PE)	51.4	47.1	34.9
Physics (PH)	32.8	29.5	21.8
Production & Industrial Engineering (PI)	35.7	32.1	23.8
Statistics (ST)	25	22.5	16.6
Textile Engineering & Fiber Science (TF)	41.8	37.6	27.8
Engineering Sciences (XE)	37	33.3	24.6

Humanities and Social Sciences (XH-C1 (Economics))	29.4	26.4	19.5
Humanities and Social Sciences (XH-C2 (English))	41.7	37.5	27.8
Humanities and Social Sciences (XH-C3 (Linguistics))	35.3	31.7	23.5
Humanities and Social Sciences (XH-C4 (Philosophy))	37.9	34.1	25.2
Humanities and Social Sciences (XH-C5 (Psychology))	48.5	43.6	32.3
Humanities and Social Sciences (XH-C6 (Sociology))	34.3	30.8	22.8
Life Sciences (XL)	36	32.4	24

*Normalized marks for multisession papers CE, CS and ME

GATE 2021 Cutoff For General, OBC- (NCL)/ EWS and SC/ ST/ PwD Candidates



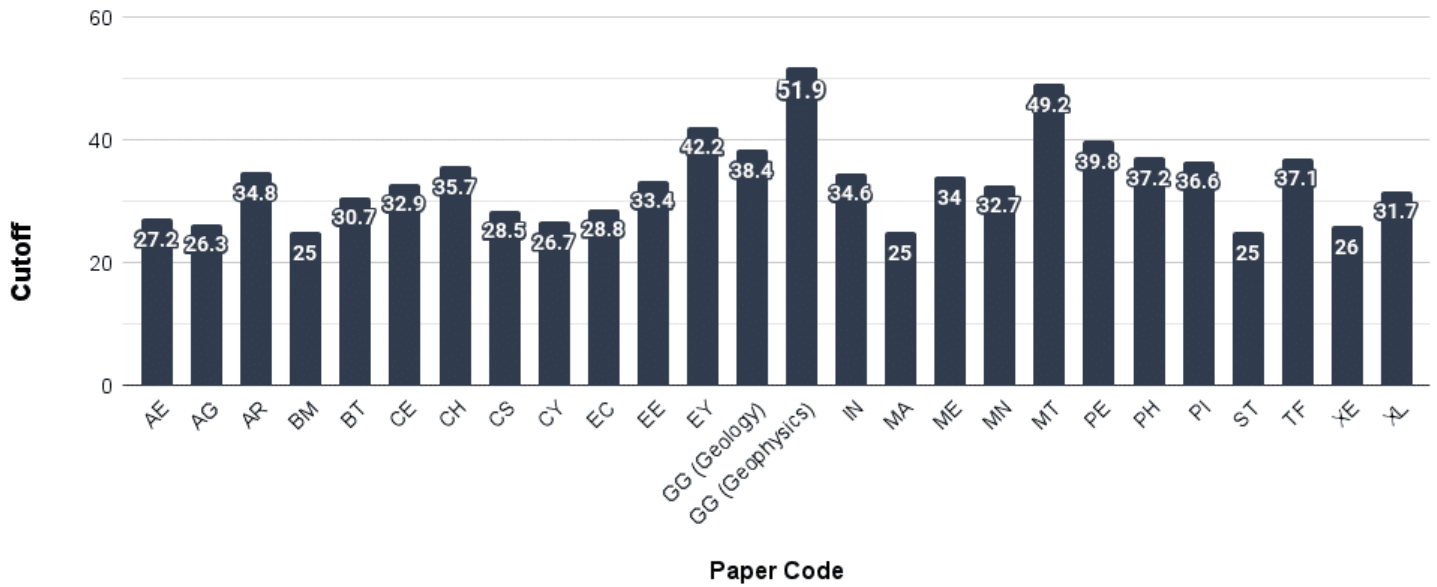
GATE Cutoff 2020

GATE Cutoff 2020 was released by [IIT Delhi](#). 8,58,000 candidates applied for the exam while 6,85,341 appeared for the exam. Out of the said candidates, 18.81% qualified the exam. Check the table below for details on GATE Cutoff 2020:

GATE 2020 Cutoff			
Paper Code	For General	For OBC- (NCL)/ EWS	For SC/ ST/ PwD
Aerospace Engineering (AE)	27.2	24.4	18.1
Agriculture Engineering (AG)	26.3	23.6	17.5
Architecture and Planning (AR)	34.8	31.3	23.2
Biomedical Engineering (BM)	25.0	22.5	16.6
Biotechnology (BT)	30.7	27.6	20.4
Civil Engineering (CE)	32.9	29.6	21.9
Chemical Engineering (CH)	35.7	32.1	23.8
Computer Science & Information Technology (CS)	28.5	25.6	19.0
Chemistry (CY)	26.7	24	17.8
Electronics & Communication Engineering (EC)	28.8	25.9	19.2
Electrical Engineering (EE)	33.4	30.0	22.2
Ecology & Evolution (EY)	42.2	37.9	28.1
Geology	38.4	34.5	25.6
Geophysics	51.9	46.7	34.6
Instrumentation Engineering (IN)	34.6	31.1	23.0

Mathematics (MA)	25.0	22.5	16.6
Mechanical Engineering (ME)	34.0	30.6	22.6
Mining Engineering (MN)	32.7	29.4	21.8
Metallurgical Engineering (MT)	49.2	44.2	32.8
Petroleum Engineering (PE)	39.8	35.8	26.5
Physics (PH)	37.2	33.4	24.8
Production & Industrial Engineering (PI)	36.6	32.9	24.4
Statistics (ST)	25.0	22.5	16.6
Textile Engineering & Fiber Science (TF)	37.1	33.3	24.7
Engineering Sciences (XE)	26.0	23.4	17.3
Life Sciences (XL)	31.7	28.5	21.1

GATE Cutoff 2020



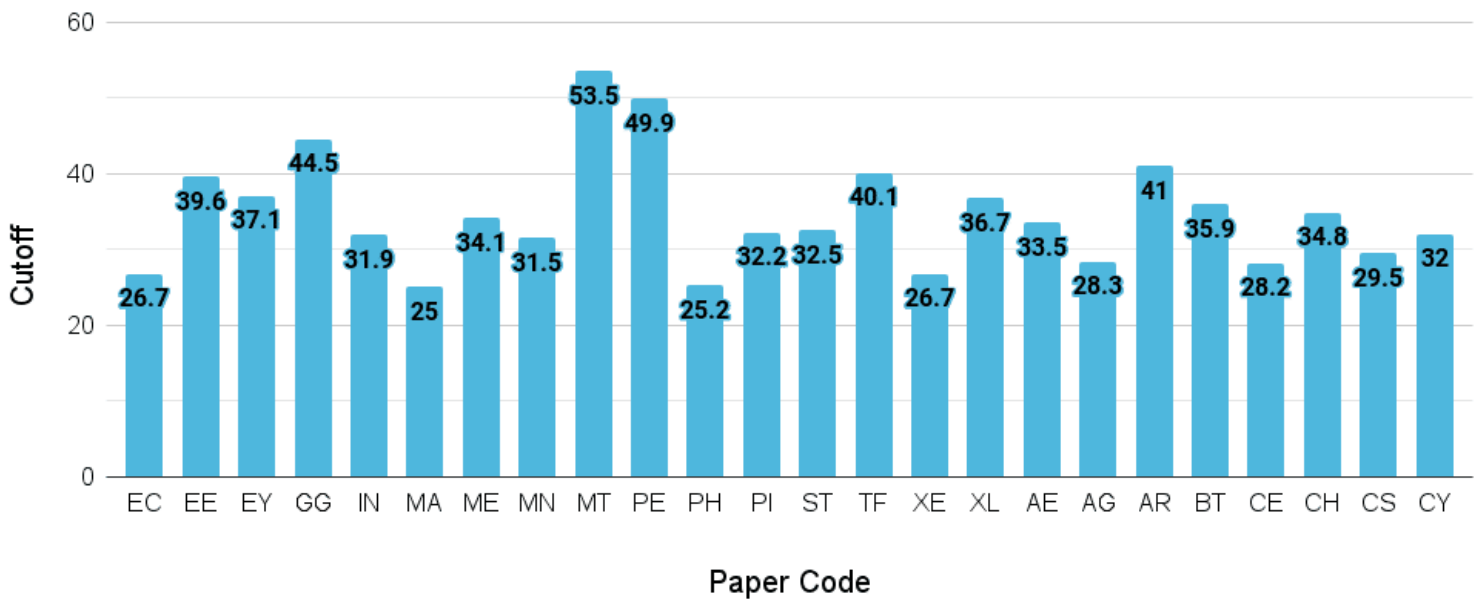
GATE Cutoff 2019

GATE 2019 was conducted for 24 papers by [IIT Madras](#). Out of the total 9,27,616 candidates who applied for the exam, 7,51,650 appeared for the exam while 16.12% qualified. Check the table below for GATE Cutoff 2019:

GATE 2019 Cutoff			
Paper Code	For General	For OBC- (NCL)/ EWS	For SC/ ST/ PwD
Electronics and Communication Engineering (EC)	26.7	24	17.8
Electrical Engineering (EE)	39.6	35.6	26.4
Ecology and Evolution (EY)	37.1	33.4	24.7
Geology and Geophysics (GG)	44.5	40.1	29.7
Instrumentation Engineering (IN)	31.9	28.7	21.3
Mathematics (MA)	25	22.5	16.7
Mechanical Engineering (ME)	34.1	30.7	22.7
Mining Engineering (MN)	31.5	28.4	21
Metallurgical Engineering (MT)	53.5	48.1	35.7
Petroleum Engineering (PE)	49.9	44.9	33.3
Physics (PH)	25.2	22.7	16.8
Production and Industrial Engineering (PI)	32.2	29	21.5
Statistics (ST)	32.5	29.2	21.7
Textile Engineering and Fibre Science (TF)	40.1	36.1	26.7
Engineering Sciences	26.7	24	17.8
Life Sciences	36.7	33	24.5

Aerospace Engineering (AE)	33.5	30.2	22.3
Agricultural Engineering (AG)	28.3	25.5	18.9
Architecture and Planning (AR)	41	36.9	27.3
Biotechnology (BT)	35.9	32.3	23.9
Civil Engineering (CE)	28.2	25.4	18.8
Chemical Engineering (CH)	34.8	31.3	23.2
Computer Science and Information Technology (CS)	29.5	26.6	19.7
Chemistry (CY)	32	28.8	21.3

GATE Cutoff 2019



Check [IIT Delhi GATE Cutoff & Admission Process](#)

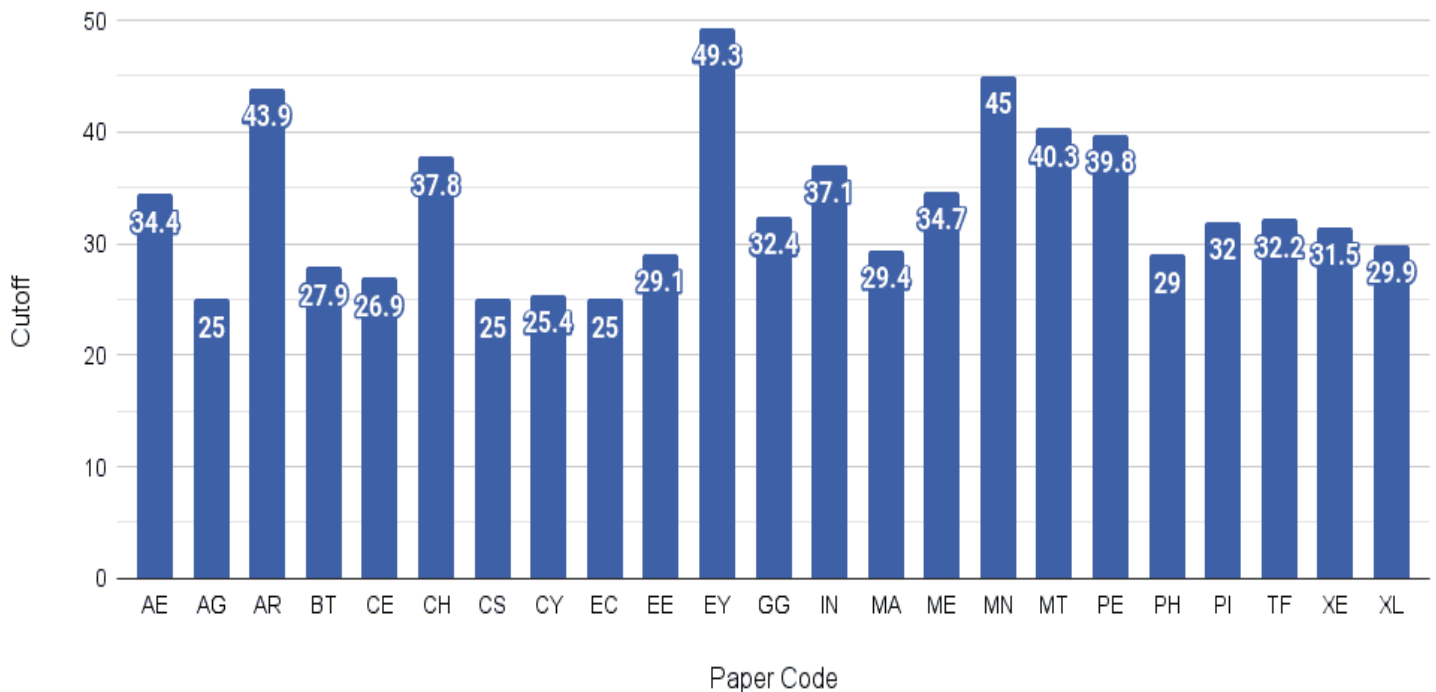
GATE Cutoff 2018

GATE 2018 was conducted by [IIT Guwahati](#). 9,34,461 candidates applied for the exam of which 7,81,854 appeared. GATE 2018 qualifying percentage was reported to be 15.13% with about 1,18,344 candidates clearing the paper. Check GATE Cutoff 2018 in the table below:

GATE 2018 Cutoff				
Paper Code	Paper Code	For General	For OBC- (NCL)/ EWS	For SC/ ST/ PwD
Aerospace Engineering	AE	34.4	30.9	22.9
Agricultural Engineering	AG	25	22.5	16.6
Architecture and Planning	AR	43.9	39.5	29.2
Biotechnology	BT	27.9	25.1	18.5
Civil Engineering	CE	26.9	24.2	17.9
Chemical Engineering	CH	37.8	34	25.1
Computer Science and Information Technology	CS	25	22.5	16.6
Chemistry	CY	25.4	22.8	16.9
Electronics and Communication Engineering	EC	25	22.5	16.6
Electrical Engineering	EE	29.1	26.1	19.4
Ecology and Evolution	EY	49.3	44.3	32.8
Geology and Geophysics	GG	32.4	29.1	21.5
Instrumentation Engineering	IN	37.1	33.3	24.7
Mathematics	MA	29.4	26.4	19.5
Mechanical Engineering	ME	34.7	31.2	23.1
Mining Engineering	MN	45	40.5	30
Metallurgical Engineering	MT	40.3	36.2	26.8

Petroleum Engineering	PE	39.8	35.8	26.5
Physics	PH	29	26.1	19.3
Production and Industrial Engineering	PI	32	28.8	21.3
Textile Engineering and Fibre Science	TF	32.2	28.9	21.4
Engineering Sciences	XE	31.5	28.3	21
Life Sciences	XL	29.9	26.9	19.9

GATE Cutoff 2018



Know [GATE Cutoff for Top M.Tech Colleges](#)

GATE Cutoff Analysis (2021 vs 2020 vs 2019)

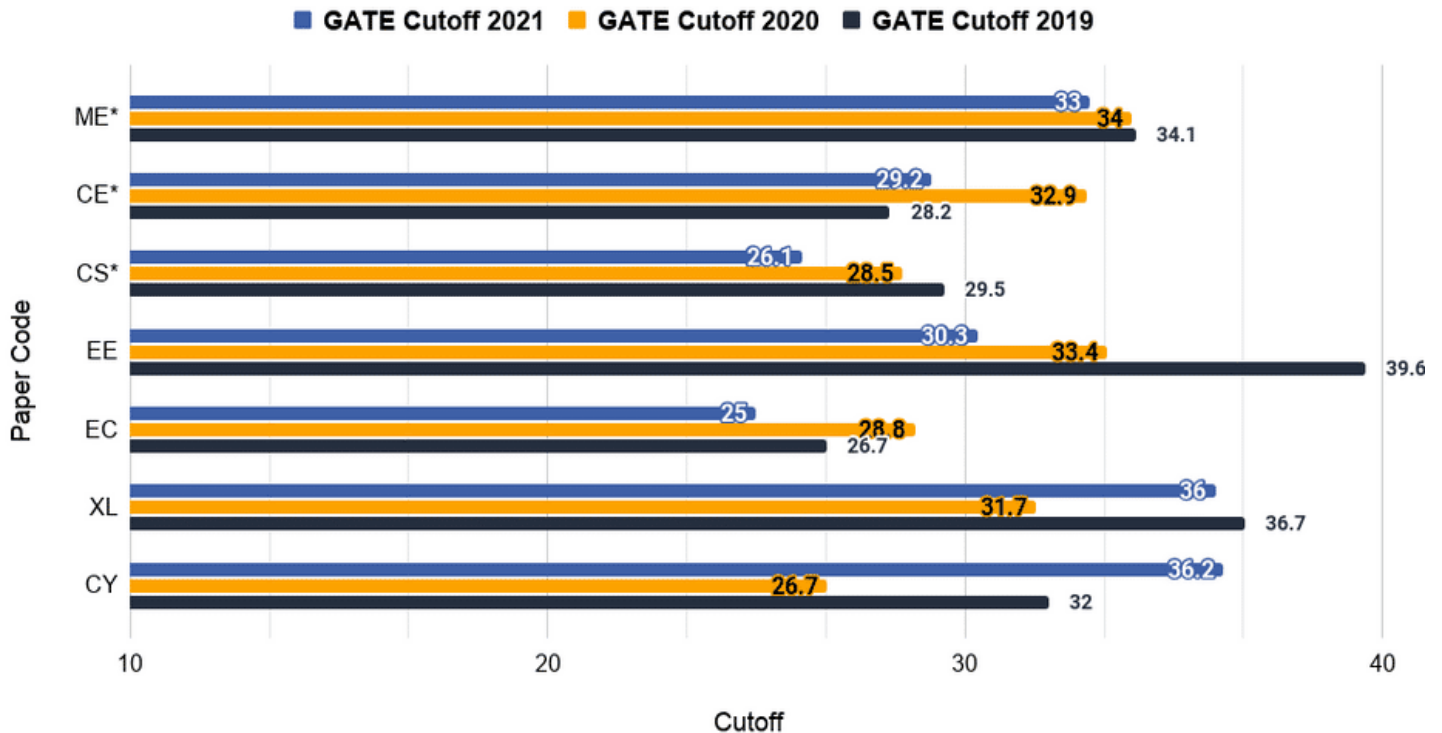
GATE Paper Name	GATE Cutoff 2021	GATE Cutoff 2020	GATE Cutoff 2019
-----------------	------------------	------------------	------------------

Aerospace Engineering (AE)	26.3	27.2	33.5
Agriculture Engineering (AG)	25	26.3	28.3
Architecture and Planning (AR)	40.9	34.8	41
Biomedical Engineering (BM)	25	25	-
Biotechnology (BT)	30	30.7	35.9
Civil Engineering (CE)	29.2	32.9	28.2
Chemical Engineering (CH)	35.1	35.7	34.8
Computer Science & Information Technology (CS)	26.1	28.5	29.5
Chemistry (CY)	36.2	26.7	32
Electronics Communication Engineering (EC)	25	28.8	26.7
Electrical Engineering (EE)	30.3	33.4	39.6
Environmental Science & Engineering (ES)	39.6	--	--
Ecology Evolution (EY)	35.7	42.2	37.1
Geology Geophysics	38.9 44.8	38.4 51.9	44.5
Instrumentation Engineering (IN)	36	34.6	31.9
Mathematics (MA)	29	25	25
Mechanical Engineering (ME)	33	34	34.1
Mining Engineering (MN)	31	32.7	31.5
Metallurgical Engineering (MT)	48.5	49.2	53.5
Petroleum Engineering (PE)	51.4	39.8	49.9
Physics (PH)	32.8	37.2	25.2
Production & Industrial Engineering (PI)	35.7	36.6	32.2

Statistics (ST)	25	25	32.5
Textile Engineering & Fiber Science (TF)	41.8	37.1	40.1
Engineering Sciences (XE)	37	26	26.7
Life Sciences (XL)	36	31.7	36.7
Humanities and Social Sciences (XH-C1 (Economics))	29.4	--	--
Humanities and Social Sciences (XH-C2 (English))	41.7	--	--
Humanities and Social Sciences (XH-C3 (Linguistics))	35.3	--	--
Humanities and Social Sciences (XH-C4 (Philosophy))	37.9	--	--
Humanities and Social Sciences (XH-C5 (Psychology))	48.5	--	--
Humanities and Social Sciences (XH-C6 (Sociology))	34.3	--	--

collegedunia.com
India's largest Student Review Platform

GATE Cutoff Analysis (2021 vs 2020 vs 2019)



Collegescart24
India's largest Student Review Platform

How to Check GATE Cutoff 2022?

Candidates can check the qualifying GATE Cutoff 2022 on the official website gate.iitkgp.ac.in. The basic steps to check the cutoff are:

- Visit the official website
- Click on the link for GATE Cutoff 2022 pdf available on the Homepage
- The cutoff PDF link will open in a new tab.
- You can also take a printout of the same for future references.

Factors Determining GATE Cutoff

GATE Cutoff depends on a number of factors. Some of the factors that determine the preparation of GATE Cutoff are:

- Difficulty Level of the exam
- Number of candidates who appeared for the exam
- The total number of seats available at the institutes

Quick Links:

GATE Financial Assistance	GATE Scholarship	GATE Rank & College Predictor	GATE PSU Recruitment
---	----------------------------------	---	--------------------------------------

GATE 2022 Marks vs Rank

GATE 2022 Marks vs Rank Analysis helps candidates know their expected ranks based on the scores in respective papers. The table below covers the Marks vs Rank analysis for top branches of GATE 2022 including Mechanical Engineering (ME), Computer Science Engineering (CS), Civil Engineering (CE), Electronics and Communication Engineering (EC) and Electrical Engineering (EE).

Rank	Marks in GATE 2022				
	ME	CS	CE	EC	EE
1-10	92+	80+	90+	73+	91+
10-50	87-92	75-80	85-90	67-73	87-91
50-100	85-87	72-75	78-85	63-67	84-87
100-200	82-85	68-72	74-78	60-63	81-84
200-500	79-82	62-68	70-74	56-60	77-81
500-1000	75-79	56-62	64-70	50-56	72-77
1000-2000	71-75	50-56	57-64	45-50	66-72
2000-5000	63-71	40-50	50-57	38-45	57-66
5000-10000	51-63	32-40	40-50	28-38	46-57

Aspirants must not get confused between GATE rank and score. Suppose a student who gets marks around 67 and GATE score around 810 is likely to get rank near 170 in Electronics and Communication Engineering. Similarly, **a candidate expecting the rank under 1000 has good chances of getting into a preferred branch in NITs.** Although, a student must prepare for an interview and GD in order to proceed in the admission process.

GATE Rank Vs Institute

While cutoff marks may vary each year, the rank required for selection in a particular college and course is almost the same because seats for a particular course do not change on a regular basis. Thus, it is advisable to score an AIR rank around 100 in GATE 2022 in order to get admission into IISc and Top IITs.

Name of the Institute(s)	Required GATE Rank
Indian Institute of Science, Bangalore Indian Institute of Technology, Bombay	(1) For Direct Admission: AIR < 100 (2) For some courses: \leq AIR \leq 600
Indian Institute of Technology, Kanpur Indian Institute of Technology, Delhi Indian Institute of Technology, Madras	(1) For Direct Admission: AIR < 100 (2) For some courses: \leq AIR \leq 300
Indian Institute of Technology, Kharagpur	AIR \leq 600
Indian Institute of Technology, Roorkee Indian Institute of Technology, Guwahati Indian Institute of Technology, BHU	AIR \leq 1000
National Institute of Technologies Indian Institute of Technology, Hyderabad Indian Institute of Technology, Patna, etc	AIR \leq 1500
Government Engineering Colleges (National & State level)	AIR \leq 2500
Private Engineering Colleges (National & State level)	AIR \geq 2500

Check [IIT Madras GATE Cutoff](#)

GATE Qualifying Cutoff V/s Admission Cutoff

Students who would be appearing in GATE 2022 should have a clear idea about the difference between GATE qualifying cutoff and GATE admission cutoff.

Particulars	GATE Qualifying Cutoff	GATE Admission Cutoff
Difference	It is the minimum marks that candidates need to score to qualify for the exam, which is different for all 25 subjects for which GATE is conducted. It also varies for different categories of candidates.	It is the minimum marks required to get admission in an institute.
Declared By	It is released by the exam conducting institute/body with the declaration of result.	It is declared by the institute at the time of admission.
Parameters to decide Cutoff	Candidates Performance, Category of Candidates, Previous Years Cutoff Trends	Total Number of Seats, Applications received, Category of Candidates

GATE Cutoff for IITs

All participating IITs release individual cutoffs for all specializations available. From the table below you can check the cutoff of various IITs. This will help you in getting an idea about the **GATE cutoff for IITs trends** and you can easily plan your GATE preparation.

IIT Name	GATE Cutoff for IITs
IIT Delhi	Click Here
IIT Madras	Click Here
IIT Roorkee	Click Here
IIT Guwahati	Click Here
IIT Bombay	Click Here
IIT Kanpur	Click Here
IIT Kharagpur	Click Here

IIT Gandhinagar	Click Here
IIT BHU	Click Here
IIT Jodhpur	Click Here
IIT Hyderabad	Click Here
IIT Patna	Click Here
IIT Mandi	Click Here
IIT Bhubaneswar	Click Here

GATE Cutoff for NITs

Qualified candidates who wish to take admission in NITs and several other centrally funded institutes are required to apply through CCMT (Centralized Counselling for M.Tech/M.Arch/M.Plan admissions). Candidates can check institute-wise GATE previous years cutoff for admission to NITs.

- **GATE Cutoff is the minimum score that a candidate needs to secure in the entrance test for admissions to the M.Tech programs at the NITs and various institutes across the country.**
- The Cutoff for **GATE** will vary from institute to institute as it is dependent on the seat intake as well as the number of applicants though it is generally common for most of the **NITs**.

Institutes	GATE Cutoff
NIT Hamirpur	Click Here
NIT Patna	Click Here
NIT Rourkela	Click Here
NIT Warangal	Click Here
NIT Tiruchirappalli	Click Here
NIT Raipur	Click Here

GATE Cutoff for PSU Recruitment

GATE Cutoff for PSU Recruitment- Candidates holding a good score in GATE can apply for various Public Sector Undertakings Jobs. Every year PSUs shortlist the candidates on the basis of GATE score. The shortlisted candidates then appear for written examination and personal interview rounds. The previous years PSU cutoff are mentioned below: [Read More About PSU Recruitment through GATE](#)

PSU/Post	Branch	GENERAL	OBC	SC	ST
JE Electronics	--	57.33	55.5	45.25	41.67
JE Electrical	--	65.17	60.25	54.66	48.83
JE Station Controller OR Train Operator (SC/ TO)	--	46.5	42.58	38.25	--
Customer Relations Assistant (CRA)	--	55.33	50.17	45.58	35.25
Electronics	--	64.5	62	54	48
JE Electrical	--	64.5	62	54	48
NBCC	Civil	60 & above	45 & above	45 & above	45 & above
GAIL	Mechanical	63.33	61.33	49	38.33
	Electrical	59.1	53.44	44.65	41.84
	Civil	73.49	66.71	60.11	53.78
	IT	70.67	66.6	--	--
MDL	Mechanical	79.54	77.32	60.9	52.87
	Electrical	59.58	57.45	43.34	43.88
BHEL	Mechanical	64.67	58	48	39.67
	Electrical	73.67	65	55.67	51.33
	Electronics	74.67	70.33	58.33	51.67